

## Chromatein Prestained Protein Ladder

Product No : PR0602  
Quantity : 2 x 250µl

Lot :  
Expiry date :  
Stable at -20°C for 2 years  
Stable at 4°C for 3 months

[info@vivantechnologies.com](mailto:info@vivantechnologies.com)

### Description:

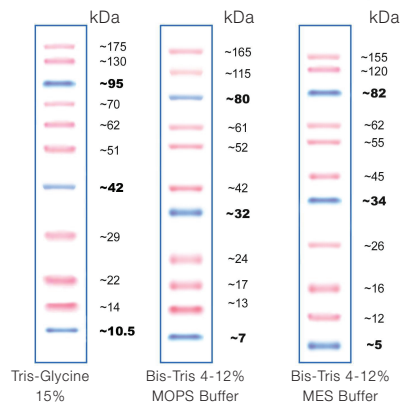
Chromatein Prestained Protein Ladder contains 11 proteins that resolve into sharp, tight bands in the range of 10-175kDa. It can be used to monitor molecular weight separation during electrophoresis, estimate molecular weights of proteins of interest, and evaluate western transfer efficiency. It contains 3 reference bands ~10, ~40 and ~90 kDa coupled with a blue dye for easy identification.



DSPR0602\_rev0\_010311

### User recommendation:

1. Thaw the ladder at room temperature for a few minutes to dissolve precipitated solids. Do not boil.
2. Load the following ladder volume on SDS-PAGE gels:
  - 5µl per well for mini-gel, 2.5µl per well for blots
  - 10µl per well for large gel, 5µl per well for blots



### Product Use Limitation

This product is for research purposes and *in vitro* use only.